

# eLEARNING

FALL 20

SEPT 29 - DEC 17



eLearning that fits every student, in every situation, everywhere.  
206-934-4060 [www.seattlecolleges.edu/distance](http://www.seattlecolleges.edu/distance)

## REGISTRATION INFORMATION

**Register Online:** [www.seattlecolleges.com/elearning](http://www.seattlecolleges.com/elearning)

**Online and Seminar courses** are completed within one quarter. Registration and course completion follow the college's quarterly schedule.

**Self-paced** students have up to 6 months to complete course requirements and can register through the 6th or 7th week of the quarter. Contact eLearning for specific dates.

*Course prerequisites must be complete at the time of registration. All math and science prerequisites should have been completed within the last three (3) years.*

## FULL TIME TUITION & FINANCIAL AID

are applicable to only **ONLINE** courses, plus an additional:  
\$7 per credit Online fee.

Students on financial aid may use their grant, if applicable to their degree or certificate program. Cost of textbooks not included.



► **Self-paced and Seminar courses** are not covered by financial aid or eligible for loan deferment. Full-time fees paid by students who have been admitted to Seattle Central are not applicable.

► **Cost Per Course:** (includes \$20 non-refundable fee)  
 WA Resident: \$585.20  
 International: \$685.20  
 US Citizen/Non-Resident: \$660.00

*All Courses and fees subject to change.*

## REFUNDS & DROPS

It is the student's responsibility to request a refund and follow it through. Students may drop in-person or online: [www.seattlecolleges.com/distance](http://www.seattlecolleges.com/distance)

**Online/Video refunds** are issued according to the following schedule:

Last day for 100%	OCT 5 (less processing fee)
Last day for 50%	OCT 18 (less processing fee)
No refund	OCT 19+
Last day to Withdraw:	NOV 20

**Self-paced and Seminar refunds** are issued within 4 weeks of registration. 100% refund = weeks 1-2. 50% refund = weeks 3-4.

Students must submit a DROP FORM to the eLearning Office OR request a SCHEDULE CHANGE online at: [www.seattlecolleges.com/elearning](http://www.seattlecolleges.com/elearning)

All textbook and (\$20) registration fees are non-refundable.

No refunds after 30 days.

**SEMINAR** courses combine online classroom instruction with independent study. Students attend five, two-hour sessions involving lectures and discussions in a seminar setting. Between seminars students work independently following an online course guide that covers self-study exercises.



## COURSES

**MUSC 116 • 8927/8928 • S01**

**ROCK MUSIC • HISTORY & PERSPECTIVES** Provides an overview of the numerous styles, musicians, and musical influences that have shaped this dynamic, multifaceted art form. Through selected readings and recordings, the course will examine Rock Music as a musical, social, cultural, economic, and political force in our society.

**DATES: TBA**

**MUSC 204 • 8903/8904 • S01**

**HISTORY OF JAZZ** Traces the roots of jazz in America, through films, lectures, recordings and live performances. Includes Rag, New Orleans, New York, Chicago, Kansas City, the Big Band era, Blues, Be-bop, Hard Bop, the New Thing, Free Form, Electric and Fusion Styles.

**DATES: TBA**

**PSYC&100 • 8942/8943 • S01**

**GENERAL PSYCHOLOGY** Intro to the scientific study of human behavior, including learning and thinking, development, perception, motivation, emotion, personality and individual differences, social and abnormal behavior and research methods.

**DATES: TBA**

**SELF-PACED** courses are conducted online. Students follow a study guide containing a syllabus, list of required texts, and instructions on how to complete lessons. Assignments and exams are evaluated by an instructor. Communication is in Canvas. Individuals can register anytime and have up to six months to complete the course. Start times and specific quarters vary. *Technology Requirement: Internet access*

## COURSES

**PRIN. OF ACCOUNTING I • ACCT&201 8806**  
Defines basic accounting concepts, principles and procedures for recording business transactions and developing financial accounting reports. Course conducted online.

**PRIN. OF ACCOUNTING II • ACCT&202 8807**  
Examines application of basic accounting concepts, principles and procedures to more complex business situations in a corporate setting. Prereq: ACCT& 201 w/minimum 2.0.

**PRIN. OF ACCOUNTING III • ACCT&203 8808**  
Analysis of accounting data as part of the managerial process of planning, decision-making and control. Concentrates on economic decision-making in enterprises. Prereq: ACCT 120, 202, or permission.

**MEDICAL TERMINOLOGY • AHE 168 • 8810**  
Intro to the concept of word building with Greek and Latin word roots, prefixes and suffixes, resulting in the acquisition of a large medical vocabulary. Prerequisite: Eligibility for ENGL098.

**ASTRONOMY • ASTR&100 • 8819**  
Emphasis on astronomic concepts fundamental to an understanding of the solar system, stars, galaxies, and origin and history of the universe. PREREQ: Completion of MAT 098 w/2.0 or higher.

**INTRO TO BUSINESS • BUS&101 • 8828**  
Survey of American business in a global context: business and economic terminology, forms of business ownership, management, accounting, finance, international marketing and foreign exchange rates. Also covers small businesses, business start-ups and franchising.

**BUSINESS LAW • BUS&201 • 8835**  
Covers nature, development and operation of principles of law relating to contracts, commercial paper, corporations, agency, partnerships, sales.

**INTRO TO MASS MEDIA • CMST&102 • 8907**  
History and impact of the mass media from hieroglyphics through print, advertising, radio, TV, movies and Internet. Critically read media texts and analyze the effects on individuals and cultures. Prereq: ENGL&101 placement.

**MICROECONOMICS • ECON&201 • 8843**  
Covers resource allocation and income distribution w/emphasis on price determination, production costs, and market structures. Application of economic reasoning to public issues and business PREREQ: Completion of MAT 098. ENG 101 recom.

**MACROECONOMICS • ECON&202 • 8845**  
Analysis of aggregate economies with a global perspective: economic output, inflation, business cycles, social welfare, global trade and finance. Cultural factors are incorporated at a variety of levels. PREREQ: Completion of MAT 098. ENG 101 recommended.

**ESL READING & LANG. ARTS • EDU 271 • 8802**  
Learn methods of assessment, placement, and instruction of ESL students in reading and language arts. Focuses on instructional techniques for the literacy level and age of the ESL student; integration of reading and language arts. Access to CLD/ELL students strongly recommended but not required.

**INTEGRATING ESL in MAINSTREAM CLASS  
EDU 272 • 8803** Specifically designed for teachers w/bilingual & monolingual students in the same class. Overview of current theories of language acquisition w/focus on instructional strategies; issues related to placement, testing, mainstreaming, needs of students.

**ENGLISH COMP. I • ENGL&101 • 8854**  
This is an introduction to the writing process. Writing assignments focus on major strategies of non-fiction prose, with subject matter drawn from firsthand experience and observation. PREREQ: ENGL& 101 Placement.

**COMPOSITION II • ENGL&102 • 8856**  
Continuation of the composition sequence with further instruction and practice in the writing process, concentrating on critical reading and writing techniques needed for the preparation and completion of documented essays. Prereq: ENGL&101..

**INTRO TO FICTION • ENGL&112 • 8860**  
Survey of 20th century fiction. Study and analysis of the art, elements, and techniques of short stories, novellas, and novels of American and international authors. Prereq: Eligibility for ENGL&099.

**AMERICAN LITERATURE III • ENGL&246 • 8868**  
Covers late 19th and 20th century writers with emphasis on modern fiction, drama, poetry and trends in literature. Practice critical techniques. Prereq: Eligibility for ENGL&099.

**ENVR. ISSUES & PROBS • ENVS&100 • 8874**  
Develop ecological literacy while exploring fundamentals of environmental science (ecosystems, biodiversity, population, natural resources). Emphasis on environmental challenges and solutions. PREREQ: Eligibility for ENGL& 101 and MATH 088 or 091.

**HEALTH AND WELLNESS • HEA 125 • 8962**

Current health education and wellness theories, concepts and lifestyle. Overview of the lifelong commitment in the development of a health-promoting lifestyle. Emphasis on personal assessment, implementation and behavior change. PREREQ: ENG 101, eligibility for MATH 084/087/091.

**U. S. HISTORY I • HIST 136 • 8895**

Reviews U.S. history from the migration of the first Native populations through Reconstruction. Focuses on encounters, territorial expansion and development of political, social, cultural, legal and economic institutions affecting the populations in regions that became the United States.

**U. S. HISTORY II • HIST 137 • 8897**

Covers U.S. history from the Civil War to the present. Focuses on industrial and urban development, immigration, race, ethnicity and reform, politics, economics, social change, and Americans at war. Prereq: Eligibility for ENGL 098

**WORLD CIVILIZATIONS III • HIST 128 • 8889**

Study of world civilization during the 19th, 20th centuries. Intro to dramatic events and often-conflicting forces & ideologies affecting contemporary life. Account of modern peoples' solutions to challenges and problems that confront civilization.

**INTERCULTURAL COMMUN • HUM 105 • 8901**

Emphasis on skills and empathy in intercultural communication gained from the study of diverse cultures through literature, theory and guest lecturers.

**HIP-HOP THEORY & CULTURE • HUM 125 • 8880**

Identifies and critically examines the theoretical foundations of hip-hop culture and rap music, the evolution of hip-hop philosophy and community from which it originated. Analyzes the influences that the background, music and style of the hip-hop generation have upon a multicultural world. Prereq: ENGL& 101.

**INTRO TO LINGUISTICS • LAN 101 • 8801**

Intro to the study of natural language. Presents the similarities in the basics of language as an instrument of thought and communication. Covers the sources for cultural differentiation between all linguistic materials.

**METEOROLOGY • MEY 100 • 8919**

Introduction to the principles of meteorology as well as weather and climate controls and effect. Surveys weather forecasting, use of weather maps, satellite data. Includes description & use of instruments. Prereq: Eligibility for MATH 084

**ROCK HISTORY & PERSPECT • MUSC 116 • 8925**

Examines rock music as a musical, social, cultural, economic and political force in the United States. Emphasizes the early rock music development.

**HISTORY OF JAZZ • MUSC 204 • 8821**

Traces the roots of jazz in America, through films, lectures, recordings and live performances. Includes Rag, New Orleans, New York, Chicago, Kansas City, the Big Band era, Blues, Be-bop, Hard Bop, the New Thing, Free Form, Electric and Fusion Styles. \*

**HUMAN NUTRITION • NUTR&101 • 8823**

Introduction to nutrition, emphasizing relationship of nutrition to growth, development, health, physical and mental functioning. Sources, functions, interrelationships & human requirements of nutrients will be examined. PREREQ: ENG&101 and eligibility for MAT 084/087/091.

**INTRO TO OCEANOGRAPHY • OCEA&100 • 8923**

The ocean in terms of physical, chemical, geological and biological process; human influence upon the ocean's natural equilibrium. PREREQ: ENG&101 and eligibility for MAT 084/087/091.

**INTRO TO PHILOSOPHY • PHIL&101 • 8932**

Introduction to philosophical thought and issues, intellectual systems and writings of the great philosophers; the nature of philosophy, the meaning of knowledge, values, reality, and related subjects.

**SYMBOLIC LOGIC • PHIL&120 • 8935**

Symbolic logic provides a tool for analyzing and evaluating statements and deductive arguments. This intro course focuses on both sentence and quantificational logic. Also covers the meaning of language and its place in the reasoning process. Prereq: MATH 088 or MATH 098 completion.

**GENERAL PSYCHOLOGY • PSYC&100 • 8944**

Introduction to the scientific study of human behavior, including learning and thinking, development, perception, motivation, emotion, personality and individual differences, social and abnormal behavior and research methods. Prereq: ENGL& 101 placement.

**INTRO TO SOCIOLOGY • SOC&101 • 8954**

Covers human social interaction with emphasis on group aspects of human behavior. Includes culture, socialization, family, education, urbanization, gender roles, social class, deviance, race, sexuality, demography and social change.





**ONLINE** courses are conducted on the Internet. Features may include self-correcting quizzes, discussion boards, interaction with students and faculty online. There are no required on-campus meetings. *To see the full list of online courses and course descriptions see the Class Schedule: [mycentral.seattlecolleges.edu](http://mycentral.seattlecolleges.edu)*



## COURSES

ACCT&201 - PRINCIPLES OF ACCT I

ACCT&202 - PRINCIPLES OF ACCT II

Prereq: ACCT& 201

ACCT&203 - PRINCIPLES OF ACCT III

Prereq: ACCT& 202

AHE168 - MEDICAL TERMINOLOGY

ANTH&100 - SURVEY OF ANTHROPOL.

ANTH&206 - CULTURAL ANTHROPOL

ART 251 - ART HISTORY

ASTR&100 - SURVEY OF ASTRONOMY

Prereq: Completion of MATH 098

BIO&100 - SURVEY OF BIOLOGY

BTM 102 - EXCEL

BTM 111 - BUSINESS APPLICATIONS I

BUS&101 - INTRO TO BUSINESS

BUS&201 - BUSINESS LAW

CMST&101 - INTRO TO COMMUNICATION

Prereq: ENGL 101 placement

CMST&220 - PUBLIC SPEAKING

Prereq: ENGL 101 placement

ECON&201 - MICROECONOMICS

Prereq: MAT 098 or equivalent, ENGL&101

ECON& 202 - MACROECONOMICS

Prereq: MAT 098 or equivalent, ENGL&101

ENGL&101 - COMPOSITION I

Prereq: ENGL&101 placement

ENGL&102 - COMPOSITION II

Prereq: ENGL&101 completion

ENGL&111 - INTRO TO LITERATURE

Prereq: ELIGIBILITY ENGL099

ENVS&100 ENVIRON ISSUES & PROBS

Prereq: Eligibility for MAT 088/091 and ENG 101

ENVS 160 - PRINC OF SUSTAINABILITY

Prereq: Eligibility for MAT 088 and ENG 101

GEOG&100 - INTRO TO GEOGRAPHY

Prereq: ENGL101

GEOL&101 - INTRO TO PHYSICAL GEOL

HEA 125 - HEALTH AND WELLNESS

HIST&128 - WORLD CIVILIZATIONS III

HIST&136 - US HISTORY 1

HIST&137 - US HISTORY 2

HUM 105 - INTERCULT COMMUNICATION

MATH 107 - MATH IN SOCIETY

Prereq: Eligibility for MATH 081, 087, or 096.

MATH&146 - Q-STATISTICS

Prereq: Math 088/098 w/2.5 or higher

MUSC&105 - MUSIC APPRECIATION

MUSC 110 - INTRO TO WORLD MUSIC

MUSC 116 - ROCK MUSIC HISTORY

NUTR&101 - HUMAN NUTRITION

Prereq: Eligibility for MATH 084/087/091 and ENGL& 101 with a 2.0 or better.

PHIL&101 - INTRO TO PHILOSOPHY

PHIL&120 - SYMBOLIC LOGIC

Prereq: MATH 088 OR 098

POLS&101 - INTRO TO POLI TICAL SCI

POLS&202 - AMERICAN GOVERNMENT

PSYC&100 - GENERAL PSYCHOLOGY

Prereq: ENGL&101 placement

PSYC&200 - LIFESPAN PSYCHOLOGY

PSYC&220 - ABNORMAL PSYCHOLOGY

SOC&101 - INTRO TO SOCIOLOGY

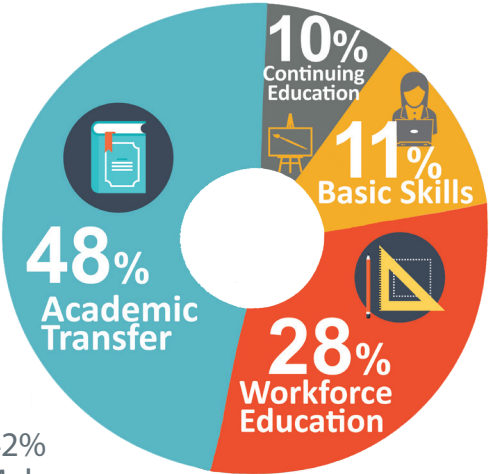
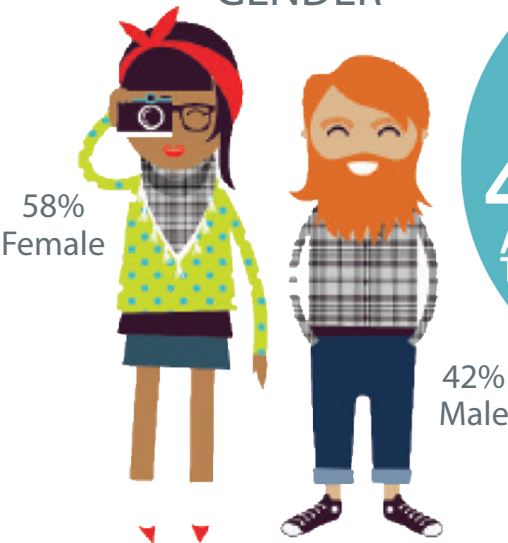
SPAN&121 - SPANISH I

MEDIAN AGE



ENROLLMENT BY PROGRAM AREA

GENDER



ETHNICITIES

