

WINTER 26 **JAN 5 - MAR 25** **SELF-PACED COURSES**



DISLRN@seattlecolleges.edu
Seattlecentral.edu/programs/elearning

REGISTRATION INFORMATION

Register Online: www.seattlecolleges.edu/elearning

Self-paced students can register later in the quarter and have up to 6 months to complete course requirements. Start and end dates vary. Contact the Self-Paced office for details: Dislrn@seattlecolleges.edu

◆ WTR quarter enrollment ends on FEB 13.

Course prerequisites must be complete at the time of registration. All math and science prerequisites should have been completed within the last three (3) years.

TUITION & FEES

► **Self-paced courses** are **not covered by financial aid** or eligible for loan deferment.

► Full-time fees paid by students who have been admitted to Seattle Central are not applicable.

► **Cost Per Course:**

WA Resident: \$659.80

International: \$759.80

US Citizen/Non-Resident: \$754.70

Payment is due at the time of registration. All Courses and fees subject to change at any time.

REFUNDS & DROPS

It is the student's responsibility to request a refund and follow it through.

Refunds are issued within 4 weeks of registration.

- ▶ 100% refund = weeks 1-2
- ▶ 50% refund = weeks 3-4
- ▶ No refunds after 30 days

To drop a self-paced course, students can email a request to the Self-Paced office OR request a **SCHEDULE CHANGE** online at:

www.seattlecolleges.edu/elearning

All textbook & material fees (if applicable) are non-refundable.

EXTENSIONS

Self-Paced students may apply for **one** 3-month extension (\$50) if they are a student in good standing and have completed half of the course. To apply, email the Extension Request form (*in the Student Handbook in Canvas*) before the last day to: Dislrn@seattlecolleges.edu

SELF-PACED courses are online. Students follow course modules containing a syllabus, list of required texts/readings, and instructions on how to complete lessons. Assignments and exams are evaluated by an instructor. Communication is in Canvas. Students are given up to six months to complete the course. *Technology Requirement: Email and Internet access, some courses require video player and recording equipment.*



CANVAS

All courses are conducted online using Canvas.

Login: canvas.seattlecentral.edu/login

Log in Instructions and Help:

<https://seattlecentral.edu/programs/elearning/canvas-login-instructions>

STUDENT RESOURCES

Student Handbook: Self-paced policies and procedures are located in this handbook in your Canvas course and at the Self-paced website.

<https://seattlecentral.edu/pdf-library/elearning/self-paced-handbook.pdf>

Grades: Final grades can be viewed in the ctLink Student Portal.

<https://wa062.ctclink.us/app/profile/login>

IT Help: For assistance with student email and web accounts, email - ITHelp@seattlecolleges.edu

ADA: For accommodations, see the Accessibility Resource Center at

<https://seattlecentral.edu/campus-life/student-support-and-services/disability-support>

COURSES

PRIN. OF ACCOUNTING I • ACCT&201

Defines basic accounting concepts, principles and procedures for recording business transactions and developing financial accounting reports. Course conducted online.

PRIN. OF ACCOUNTING II • ACCT&202

Examines application of basic accounting concepts, principles and procedures to more complex business situations in a corporate setting. Prereq: ACCT& 201 w/minimum 2.0.

PRIN. OF ACCOUNTING III • ACCT&203

Analysis of accounting data as part of the managerial process of planning, decision-making and control. Concentrates on economic decision-making in enterprises. Prereq: ACCT 120, 202, or permission.

MEDICAL TERMINOLOGY • AHE 168

Intro to the concept of word building with Greek and Latin word roots, prefixes and suffixes, resulting in the acquisition of a large medical vocabulary. Prerequisite: Eligibility for ENGL098.

RACE & CULTURE • AME 150

Surveys the making of the multicultural United States from indigenous homelands to settler colonialism. Examines experiences of indigenous peoples, African Americans, Latinx Americans and Asian Americans in exposing the systemic race, class, gender oppression that generates wealth & power in the U.S. and how the struggles of people of color for political power, community well-being and cultural integrity embody the U.S.'s possibility for freedom and democracy.

SURVEY OF ANTHROPOLOGY • ANTH&100

Covers biological and cultural anthropology, linguistics, and archaeology. Survey of humans over time and space. Includes evolution, ethics, political structure, social structure, economics, and communication. Prereq: Eligible ENGL&101

CULTURAL ANTHROPOLOGY • ANTH&206

Intro to the study of human culture, including social organization, economics, political systems, religion, technology, art and language. Cultural perspective focuses on the interactions between large & small scale societies in an increasingly globalized world.

ASTRONOMY • ASTR&100

Emphasis on astronomic concepts fundamental to an understanding of the solar system, stars, galaxies, and origin and history of the universe. Prereq: Completion of MAT 098 w/2.0 or higher.

INTRO TO BUSINESS • BUS&101

Survey of American business in a global context: business and economic terminology, forms of business ownership, management, accounting, finance, international marketing and foreign exchange rates. Also covers small businesses, business start-ups and franchising.

BUSINESS LAW • BUS&201

Covers nature, development and operation of principles of law relating to contracts, commercial paper, corporations, agency, partnerships, sales. Prereq: Eligibility for ENGL&101.

INTRO TO MASS MEDIA • CMST&102

History and impact of the mass media from hieroglyphics through print, advertising, radio, TV, movies and Internet. Critically read media texts and analyze the effects on individuals and cultures. Prereq: ENGL&101 placement.

MICROECONOMICS • ECON&201

Covers resource allocation and income distribution w/emphasis on price determination, production costs, and market structures. Application of economic reasoning to public issues and business PREREQ: Completion of MAT 098. ENG 101 recom.

MACROECONOMICS • ECON&202

Analysis of aggregate economies with a global perspective: economic output, inflation, business cycles, social welfare, global trade and finance. Cultural factors are incorporated at a variety of levels. PREREQ: Completion of MAT 098. ENG 101 recomm.

ENGLISH COMPOSITION I • ENGL&101

This is a college-level writing course that emphasizes academic writing and major strategies of reading & writing analytically. Writing assignments focus on engaging with and responding to a variety of texts. Instruction encourages students to develop, through revision and reflection, as readers, writers, and critical thinkers. Prereq: Eligibility for ENGL& 101.

COMPOSITION II • ENGL&102

Continuation of the composition sequence with further instruction and practice in the writing process, concentrating on critical reading and writing techniques needed for the preparation and completion of documented essays. Prereq: ENGL&101.

INTRO TO FICTION • ENGL&112

Survey of 20th century fiction. Study and analysis of the art, elements, and techniques of short stories, novellas, and novels of American and international authors. Prereq: Eligibility for ENGL&099.

AMERICAN LITERATURE III • ENGL&246

Covers late 19th and 20th century writers with emphasis on modern fiction, drama, poetry and trends in literature. Practice critical techniques. Prereq: Eligibility for ENGL&099.

ENVIRONMENT ISSUES&PROB • ENVS&100

Develop ecological literacy while exploring fundamentals of environmental science (ecosystems, biodiversity, population, natural resources). Emphasis on environmental challenges and solutions. PREREQ: Eligibility for ENGL& 101 and MATH 088 or 091.

COURSES

HEALTH AND WELLNESS • HEA 125

Current health education, wellness theories, concepts and lifestyle. Overview of the lifelong commitment in the development of a health-promoting lifestyle. Emphasis on personal assessment, implementation, behavior change. Prereq: ENG 101, eligibility for MATH 084/087/091.

WORLD CIVILIZATIONS III • HIST&128

Study of world civilization during the 19th, 20th centuries. Intro to dramatic events and often-conflicting forces & ideologies affecting contemporary life. Account of modern peoples' solutions to challenges and problems that confront civilization.

U. S. HISTORY I • HIST&136

Reviews U.S. history from the migration of the first Native populations through Reconstruction. Focuses on encounters, territorial expansion and development of political, social, cultural, legal and economic institutions affecting the populations in regions that became the United States.

U. S. HISTORY II • HIST&137

Covers U.S. history from the Civil War to the present. Focuses on industrial and urban development, immigration, race, ethnicity and reform, politics, economics, social change, and Americans at war. Prereq: Eligibility for ENGL 098

PACIFIC NORTHWEST HISTORY • HIST&214

Explores the histories of the Pacific NW, especially Washington State, from First Peoples through cultural contact, exchange, colonization, political & economic development. Emphasizes the growth of the Northwest in relation to national and global developments, foregrounding the dynamics of a multicultural society responding to environmental crises. Prereq: ENGL&101 eligibility

INTERCULTURAL COMMUN • HUM 105

Examines skills in communication and empathy required for intercultural communication. Includes an interdisciplinary study of diverse cultures, perspectives in the US in the context of economic, political, cultural globalization.

HIP-HOP THEORY & CULTURE • HUM 125

Identifies and critically examines the theoretical foundations of hip-hop culture and rap music, the evolution of hip-hop philosophy and community from which it originated. Analyzes the influences that the background, music and style of the hip-hop generation have upon a multicultural world. Prereq: ENGL& 101.

INTRO TO LINGUISTICS • LAN 101

Intro to the study of natural language. Presents the similarities in the basics of language as an instrument of thought and communication. Covers the sources for cultural differentiation between all linguistic materials.

METEOROLOGY • MEY 100

Introduction to the principles of meteorology as well as weather and climate controls and effect. Surveys weather forecasting, use of weather maps, satellite data. Includes description & use of instruments. Prereq: Eligibility for MATH 084

HUMAN NUTRITION • NUTR&101

Introduction to nutrition, emphasizing relationship of nutrition to growth, development, health, physical and mental functioning. Sources, functions, interrelationships & human requirements of nutrients will be examined. PREREQ: ENG&101 and eligibility for MAT 084/087/091.

INTRO TO OCEANOGRAPHY • OCEA&100

The ocean in terms of physical, chemical, geological and biological process; human influence upon the ocean's natural equilibrium. PREREQ: ENG&101 and eligibility for MAT 084/087/091.

INTRO TO PHILOSOPHY • PHIL&101

Introduction to philosophical thought and issues, intellectual systems and writings of the great philosophers; the nature of philosophy, the meaning of knowledge, values, reality, and related subjects.

SYMBOLIC LOGIC • PHIL&120

Symbolic logic provides a tool for analyzing and evaluating statements and deductive arguments. This intro course focuses on both sentence and quantificational logic. Also covers the meaning of language and its place in the reasoning process. Prereq: MATH 088 or MATH 098 completion.

GENERAL PSYCHOLOGY • PSYC&100

Introduction to the scientific study of human behavior, including learning and thinking, development, perception, motivation, emotion, personality and individual differences, social and abnormal behavior and research methods. Prereq: ENGL& 101 eligibility.

LIFESPAN PSYCHOLOGY • PSYC&200

Survey of human physical, psychological, and sociocultural development from conception through death. Emphasis on major developmental theories, research and research methods of studying lifespan development. Prereq: PSYC&100

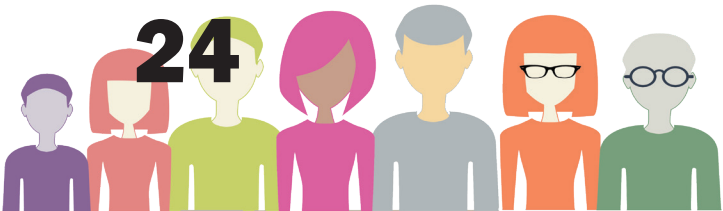
PERSON & INDIVIDUAL DIFFERENCES • PSYC 210

Introduces the study of personality and individual differences, including theory, measurement, and research. Application of psychological principles to problems of everyday living. Prereq: PSYC&100 and ENGL&101 eligibility.

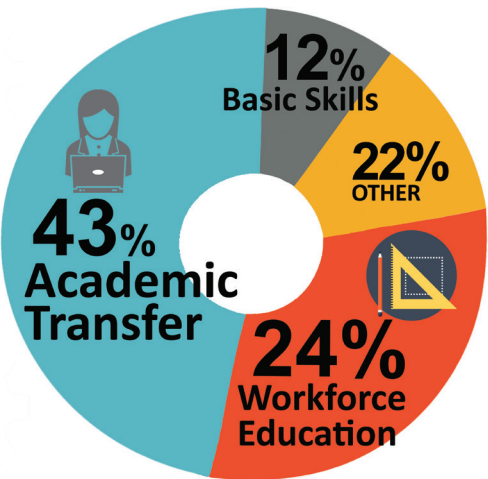
ABNORMAL PSYCHOLOGY • PSYC&220

Provides an overview of research and theories in abnormal psychology. Emphasis on psychological, social, historical, cultural, and physiological research into abnormal psychology. Addresses ethical issues of diagnosis, treatment and major diagnostic categories such as anxiety, mood, psychotic, dissociative, eating, and personality disorders, and disorders of childhood and older adulthood. Prereq: Eligibility for ENGL&101

MEDIAN AGE



ENROLLMENT BY PURPOSE



ETHNICITIES

