

# ***SELF-PACED COURSES***

**FALL 25**

**SEPT 29 - DEC 17**



**DISLRN@seattlecolleges.edu**  
**Seattlecentral.edu/programs/elearning**

## REGISTRATION INFORMATION

**Register Online:** [www.seattlecolleges.edu/elearning](http://www.seattlecolleges.edu/elearning)

**Self-paced** students can register later in the quarter and have up to 6 months to complete course requirements. Start and end dates vary. Contact the Self-Paced office for details at: [Dislrn@seattlecolleges.edu](mailto:Dislrn@seattlecolleges.edu)

◆ **Fall quarter enrollment ends on NOV. 5.**

*Course prerequisites must be complete at the time of registration. All math and science prerequisites should have been completed within the last three (3) years.*

## TUITION & FEES

▶ **Self-paced courses** are not covered by financial aid or eligible for loan deferment.

▶ Full-time fees paid by students who have been admitted to Seattle Central are not applicable.

▶ **Cost Per Course:**

**WA Resident: \$659.80**

**International: \$759.80**

**US Citizen/Non-Resident: \$754.70**

*Payment is due at the time of registration. All Courses and fees subject to change.*

## REFUNDS & DROPS

It is the student's responsibility to request a refund and follow it through.

**Refunds** are issued within 4 weeks of registration.

- ▶ 100% refund = weeks 1-2
- ▶ 50% refund = weeks 3-4
- ▶ No refunds after 30 days

To drop a self-paced course, students can email a request to the Self-Paced office OR request a **SCHEDULE CHANGE** online at:

**[www.seattlecolleges.edu/elearning](http://www.seattlecolleges.edu/elearning)**

All textbook & material fees (if applicable) are non-refundable.

## EXTENSIONS

Self-Paced students may apply for **one** 3-month extension (\$50) if they are a student in good standing and have completed half of the course. To apply, email the Extension Request form (*in the Student Handbook in Canvas*) before the last day to: [Dislrn@seattlecolleges.edu](mailto:Dislrn@seattlecolleges.edu)

**SELF-PACED** courses are online. Students follow course modules containing a syllabus, list of required texts/readings, and instructions on how to complete lessons. Assignments and exams are evaluated by an instructor. Communication is in Canvas. Students are given up to six months to complete the course. *Technology Requirement: Email and Internet access, some courses require video player and recording equipment.*



## CANVAS

All courses are conducted online using Canvas.

Login: [canvas.seattlecentral.edu/login](https://canvas.seattlecentral.edu/login)

Log in Instructions and Help:

<https://seattlecentral.edu/programs/elearning/canvas-login-instructions>

## STUDENT RESOURCES

**Student Handbook:** Self-paced policies and procedures are located in this handbook in your Canvas course and at the Self-paced website.

<https://seattlecentral.edu/pdf-library/elearning/self-paced-handbook.pdf>

**Grades:** Final grades can be viewed in the ctLink Student Portal.

<https://wa062.ctclink.us/app/profile/login>

**IT Help:** For assistance with student email and web accounts, email - [ITHelp@seattlecolleges.edu](mailto:ITHelp@seattlecolleges.edu)

**ADA:** For accommodations, see the Accessibility Resource Center at

<https://seattlecentral.edu/campus-life/student-support-and-services/disability-support>

## COURSES

**PRIN. OF ACCOUNTING I • ACCT&201**

Defines basic accounting concepts, principles and procedures for recording business transactions and developing financial accounting reports. Prereq: ACCT110 recommended

**PRIN. OF ACCOUNTING II • ACCT&202**

Examines application of basic accounting concepts, principles and procedures to more complex business situations in a corporate setting. Prereq: ACCT& 201 w/minimum 2.0.

**PRIN. OF ACCOUNTING III • ACCT&203**

Analysis of accounting data as part of the managerial process of planning, decision-making and control. Concentrates on economic decision-making in enterprises. Prereq: ACCT 120, 202, or permission.

**MEDICAL TERMINOLOGY • AHE 168**

Intro to the concept of word building with Greek and Latin word roots, prefixes and suffixes, resulting in the acquisition of a large medical vocabulary. Prerequisite: Eligibility for ENGL098.

**RACE & CULTURE • AME 150**

Surveys the making of the multicultural United States from indigenous homelands to settler colonialism. Examines experiences of indigenous peoples, African Americans, Latinx Americans and Asian Americans in exposing the systemic race, class, gender oppression that generates wealth & power in the U.S. and how the struggles of people of color for political power, community well-being and cultural integrity embody the U.S.'s possibility for freedom and democracy.

**SURVEY OF ANTHROPOLOGY • ANTH&100**

Covers biological and cultural anthropology, linguistics, and archaeology. Survey of humans over time and space. Includes evolution, ethics, political structure, social structure, economics, and communication. Prereq: Eligible ENGL&101

**CULTURAL ANTHROPOLOGY • ANTH&206**

Intro to the study of human culture, including social organization, economics, political systems, religion, technology, art and language. Cultural perspective focuses on the interactions between large & small scale societies in an increasingly globalized world. Prereq: Eligible ENGL099

**ASTRONOMY • ASTR&100**

Emphasis on astronomic concepts fundamental to an understanding of the solar system, stars, galaxies, and origin and history of the universe. PREREQ: Completion of MAT 098 w/2.0 or higher.

**INTRO TO BUSINESS • BUS&101**

Survey of American business in a global context: business and economic terminology, forms of business ownership, management, accounting, finance, international marketing and foreign exchange rates. Also covers small businesses, business start-ups and franchising.

**BUSINESS LAW • BUS&201**

Covers nature, development and operation of principles of law relating to contracts, commercial paper, corporations, agency, partnerships, sales. Prerequisite: Eligibility for ENGL&101.

**INTRO TO MASS MEDIA • CMST&102**

History and impact of the mass media from hieroglyphics through print, advertising, radio, TV, movies and Internet. Critically read media texts and analyze the effects on individuals and cultures. Prereq: ENGL&101 placement.

**MICROECONOMICS • ECON&201**

Covers resource allocation and income distribution w/emphasis on price determination, production costs, and market structures. Application of economic reasoning to public issues and business PREREQ: Completion of MAT 098. ENG 101 recom.

**MACROECONOMICS • ECON&202**

Analysis of aggregate economies with a global perspective: economic output, inflation, business cycles, social welfare, global trade and finance. Cultural factors are incorporated at a variety of levels. PREREQ: Completion of MAT 098. ENG 101 recomm.

**ENGLISH COMP. I • ENGL&101**

This is a college-level writing course that emphasizes academic writing and major strategies of reading & writing analytically. Writing assignments focus on engaging with and responding to a variety of texts. Instruction encourages students to develop, through revision and reflection, as readers, writers, and critical thinkers. Prereq: Eligibility for ENGL& 101.

**COMPOSITION II • ENGL&102**

Continuation of the composition sequence with further instruction and practice in the writing process, concentrating on critical reading and writing techniques needed for the preparation and completion of documented essays. Prereq: ENGL&101.

**INTRO TO FICTION • ENGL&112**

Survey of 20th century fiction. Study and analysis of the art, elements, and techniques of short stories, novellas, and novels of American and international authors. Prereq: Eligibility for ENGL&099.

**AMERICAN LITERATURE III • ENGL&246**

Covers late 19th and 20th century writers with emphasis on modern fiction, drama, poetry and trends in literature. Practice critical techniques. Prereq: Eligibility for ENGL&099.

**ENVIRONMENT ISSUES & PROB • ENVS&100**

Develop ecological literacy while exploring fundamentals of environmental science (ecosystems, biodiversity, population, natural resources). Emphasis on environmental challenges and solutions. PREREQ: Eligibility for ENGL& 101 and MATH 088.

**HEALTH AND WELLNESS • HEA 125**

Overview of health as individual and community-based social construct. Analyzes health determinants and health outcomes as a function of genetics, culture, environment & health behaviors. Emphasizes a holistic model, intellectual inquiry into what constitutes health & well-being. Prereq: ENG 101, eligibility for MATH 087.

**WORLD CIVILIZATIONS III • HIST&128**

Study of world civilization during the 19th, 20th centuries. Intro to dramatic events and often-conflicting forces & ideologies affecting contemporary life. Account of modern peoples' solutions to challenges and problems that confront civilization.

**U.S. HISTORY I • HIST&136**

Reviews U.S. history from the migration of the first Native populations through Reconstruction. Focuses on encounters, territorial expansion and development of political, social, cultural, legal and economic institutions affecting the populations in regions that became the United States.

**U. S. HISTORY II • HIST&137**

Covers U.S. history from the Civil War to the present. Focuses on industrial and urban development, immigration, race, ethnicity and reform, politics, economics, social change, and Americans at war. Prereq: Eligibility for ENGL 098

**PACIFIC NORTHWEST HISTORY • HIST&214**

This course explores the histories of the Pacific NW, especially Washington State, from First Peoples through cultural contact, exchange, colonization, political and economic development. Emphasizes the growth of the Northwest in relation to national and global developments, foregrounding the dynamics of a multicultural society responding to environmental crises. Prereq: ENGL&101 eligibility

**INTERCULTURAL COMMUN • HUM 105**

Emphasis on skills and empathy in intercultural communication gained from the study of diverse cultures through literature, theory and guest lecturers.

**HIP-HOP THEORY & CULTURE • HUM 125**

Identifies and critically examines the theoretical foundations of hip-hop culture and rap music, the evolution of hip-hop philosophy and community from which it originated. Analyzes the influences that the background, music and style of the hip-hop generation have upon a multicultural world. Prereq: ENGL& 101.

**INTRO TO LINGUISTICS • LAN 101**

Intro to the study of natural language. Presents the similarities in the basics of language as an instrument of thought and communication. Covers the sources for cultural differentiation between all linguistic materials.

**METEOROLOGY • MEY 100**

Introduction to the principles of meteorology as well as weather and climate controls and effect. Surveys weather forecasting, use of weather maps, satellite data. Includes description & use of instruments. Prereq: Eligibility for MATH 084

**HUMAN NUTRITION • NUTR&101**

Introduction to nutrition, emphasizing relationship of nutrition to growth, development, health, physical and mental functioning. Sources, functions, interrelationships & human requirements of nutrients will be examined. PREREQ: ENG&101 and eligibility for MAT 084/087/091.

**INTRO TO OCEANOGRAPHY • OCEA&100**

The ocean in terms of physical, chemical, geological and biological process; human influence upon the ocean's natural equilibrium. PREREQ: ENG&101 and eligibility for MAT 084/087/091.

**INTRO TO PHILOSOPHY • PHIL&101**

Introduction to philosophical thought and issues, intellectual systems and writings of the great philosophers; the nature of philosophy, the meaning of knowledge, values, reality, and related subjects.

**SYMBOLIC LOGIC • PHIL&120**

Symbolic logic provides a tool for analyzing and evaluating statements and deductive arguments. This intro course focuses on both sentence and quantificational logic. Also covers the meaning of language and its place in the reasoning process. Prereq: MATH 088 or MATH 098 completion.

**GENERAL PSYCHOLOGY • PSYC&100**

Introduction to the scientific study of human behavior, including learning and thinking, development, perception, motivation, emotion, personality and individual differences, social and abnormal behavior and research methods. Prereq: ENGL& 101 eligibility.

**LIFESPAN PSYCHOLOGY • PSYC&200**

Survey of human physical, psychological, and sociocultural development from conception through death. Emphasis on major developmental theories, research and research methods of studying lifespan development. Prereq: PSYC&100

**PERSON & INDIVIDUAL DIFFERENCES • PSYC 210**

Introduces the study of personality and individual differences, including theory, measurement, and research. Application of psychological principles to problems of everyday living.

**ABNORMAL PSYCHOLOGY • PSYC&220**

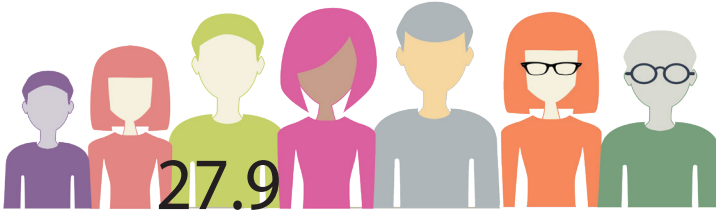
Provides an overview of research and theories in abnormal psychology. Emphasis on psychological, social, historical, cultural, and physiological research into abnormal psychology. Addresses ethical issues of diagnosis, treatment and major diagnostic categories such as anxiety, mood, psychotic, dissociative, eating, and personality disorders, and disorders of childhood and older adulthood.

**INTRO TO SOCIOLOGY • SOC&101**

Covers human social interaction with emphasis on group aspects of human behavior. Includes culture, socialization, family, education, urbanization, gender roles, social class, deviance, race, sexuality, demography and social change.



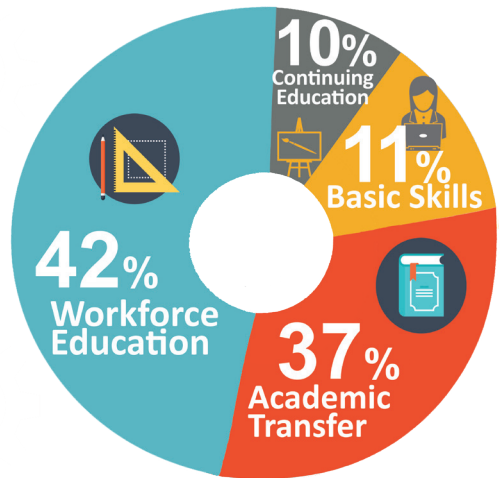
## MEDIAN AGE



## ENROLLMENT BY PURPOSE

54% attend  
Part-Time

46% attend  
Full-time



## ETHNICITIES

