

## Pathway: Nutrition Science

### Area of Study: Health and Medical



Seattle Colleges is committed to accessibility. If support is needed in accessing the information within this document please contact [ARC.Central@seattlecolleges.edu](mailto:ARC.Central@seattlecolleges.edu).

#### Overview

This two-year pathway is designed for students who wish to complete an Associate of Arts - Direct Transfer Agreement degree with a concentration in Nutrition Science. Students in this program will study how nutrients and food components influence growth, metabolism, health, disease and includes human behavior as it relates to food choices. (Read program QR code to see more)

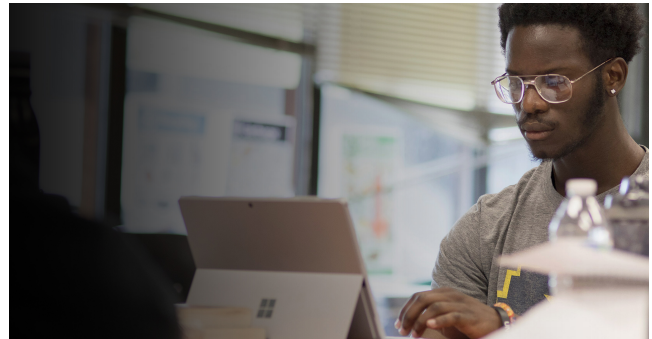
#### Estimated Length of Completion

Degree: Associate of Arts - Direct Transfer Agreement (LASDTAA)  
6 quarters, Full time

#### Career Opportunities

A Nutrition Science pathway can lead to various career opportunities. Examples include:

- Registered Dietician
- Food Analyst
- Hospital Administrator
- Nutrition Educator
- Doctor
- Physical Therapist
- Physician's Assistant
- Clinical Nutrition
- Corporate Wellness
- Food Industry Marketer
- Public Health Professional ...(Read program QR code to see more)



#### Future Education

Once you complete this Associate degree, additional education opportunities include:

- A Bachelor's degree in **Nutrition Science, Food Science, Dietetics, Physiology and Metabolism, Toxicology**, or a related field at a four-year college or university.
- A [Bachelor of Applied Science \(BAS\)](#) degree at one of the Seattle Colleges. *BAS degrees are typically terminal degrees. See an Advisor for more information.*

Seattle Central College has direct transfer agreements with four-year institutions throughout Washington state, including University of Washington, Washington State University and Seattle University. Nutrition Science graduates from Central have also transferred to out-of-state institutions. Program and admissions requirements vary from college to college. Contact an advisor to create an educational plan tailored to transfer to the institution of your choice. You can use the College Navigator search engine found at <http://nces.ed.gov/collegenavigator> to find Nutrition Science programs in Washington state or around the country.



Scan QR code to learn more about this program.

04/28/2024

## Pathway: Nutrition Science

### Area of Study: Health and Medical



#### Get Started

**Step 1:** Apply and register at South Seattle College anytime (the application is always free). Once you become a student, register for classes using the online class schedule and go to the academic calendar for registration dates and tuition deadlines.

**Step 2:** See an advisor to create a personalized educational plan by the end of your second quarter. Your plan will include prerequisites, graduation requirements, and transfer preparation if you plan to transfer to another college or university to earn a bachelor's degree.

#### Tuition and Fees

Learn more about the [estimated cost of attendance and general fees to attend college](#).

#### Financial Aid and Funding Resources

It's time to apply for Financial Aid for next year by completing either the [FAFSA](#) or the [WASFA](#) 2024-25.

#### Need help paying for college?

To apply for financial aid, including grants and scholarships you don't have to pay back, visit [South's Financial Aid Department](#) for details.

#### Program Contact

For more information, contact  
Science, Technology, Engineering, Math, and Business  
Division  
206.934.3858  
[STEMB.Central@seattlecolleges.edu](mailto:STEMB.Central@seattlecolleges.edu)

#### Advising Contact

- [Advising hours and services](#)
- Schedule phone and Zoom appointments: [Starfish](#), Email, and phone
- [AdvisorCentral@seattlecolleges.edu](mailto:AdvisorCentral@seattlecolleges.edu)
- 206.934.4068
- Location: Broadway Campus BE1102



Scan QR code to learn more  
about this program.

04/28/2024



## Pathway: Nutrition Science

### Area of Study: Health and Medical



#### Before Quarter One

- Attend New Student Orientation
- Explore careers and majors: workshops, counseling and [Career Exploration Center](#)
- Visit the [Financial Aid Office](#) to explore how to pay for college
- Transfer previous college credits to Central *if applicable*
- Take the [Math](#) and [English placement](#) if needed

#### Sample Schedule

This is an example of a quarterly schedule:

##### Quarter 1

- ENGL&101 English Composition I (5 units)
- MATH&146 Introduction To Statistics (5 units)
- STEM118 Sci, Equity, Social Justice (2 units)
- HDC101 Orientation to College (3 units)

##### Quarter 2

- CHEM&121 Intro To Chemistry (5 units)
- NUTR&101 Nutrition (5 units)
- Visual, Literary and Perf Arts (5 units)

##### Quarter 3

- Individuals/Cultures/Societies (5 units)
- CHEM&131 Intro To Organic/Biochem (5 units)
- Visual, Literary and Perf Arts (5 units)

##### Quarter 4

- BIOL&160 General Biology W/ Lab (5 units)
- ENGL&102 Composition II (5 units)
- Individuals/Cultures/Societies (5 units)

##### Quarter 5

- BIOL&241 Human A & P 1 (5 units)
- Visual, Literary and Perf Arts (5 units)
- Individuals/Cultures/Societies (5 units)

##### Quarter 6

- BIOL&260 Microbiology (5 units)
- BIOL&242 Human A & P 2 (5 units)
- Individuals/Cultures/Societies (5 units)



Scan QR code to learn more  
about this program.

04/28/2024



### Sample Quarterly To-Do List

This is an example of a quarterly to-do list:

#### Quarter 1

- Schedule an appointment with your assigned advisor in [Starfish](#) to discuss your academic goals and to create a short-term educational plan
- Visit the [Learning Support and Tutoring Center](#) for tutoring
- Drop by the [Library](#) to get help with research; check out resources; access computers and study space; and create media projects

#### Quarter 2

- Research and develop a list of four-year colleges and universities
- Attend transfer workshops and a transfer fair
- Apply for the [Seattle Colleges Foundation Scholarship](#) and other scholarships

#### Quarter 3

- Consider [Student Leadership](#) positions and other on-campus jobs
- Visit potential universities and determine application deadlines
- Meet with [Transfer Center](#) advisor to determine transfer eligibility

#### Quarter 4

- Create long-term educational plan with your assigned advisor
- Research and contact Nutrition Science departments at potential universities
- Attend transfer workshops and a transfer fair
- Attend transfer day at prospective university
- Write your personal statement for university applications

#### Quarter 5

- Apply to universities or colleges and scholarships
- Look for summer internships such as Research Experience for Undergraduates (REUs).
- Plan to participate in the transfer student events at prospective universities
- Apply for FAFSA or WASFA at transfer university
- Ask for letters of recommendation (if needed)

#### Quarter 6

- [Apply for graduation for the AA-DTA degree](#)
- Check in with university for admissions status
- Order cap and gown for commencement and join [Seattle Central Alumni Association](#)
- Attend graduation fair and [commencement ceremony](#)



Scan QR code to learn more  
about this program.

04/28/2024



**SEATTLE CENTRAL  
COLLEGE**