

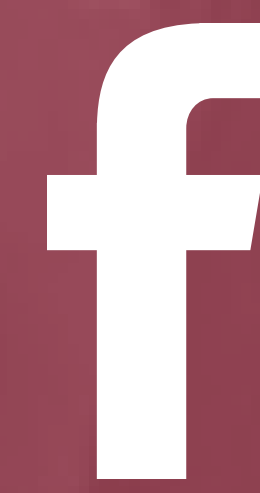
## WHO WE ARE

MESA -- Math, Engineering, Science Achievement -- at Seattle Central College is a friendly and comfortable space where students gather to study and engage in science.

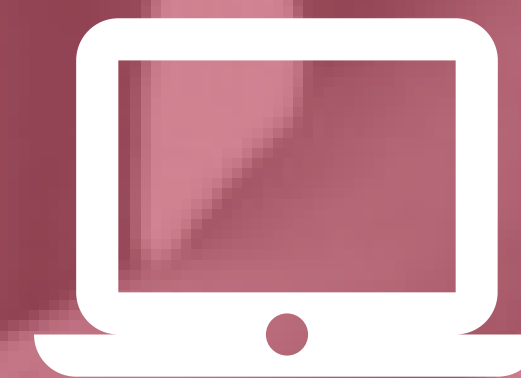
We provide a unique combination of STEM activities, academic support, industry involvement, and an encouraging community environment to help students successfully transfer to four-year institutions in pursuit of STEM-based majors.

Our overriding aim is to diversify the STEM workforce by addressing the challenges historically underrepresented and underserved students face in their educational and career development.

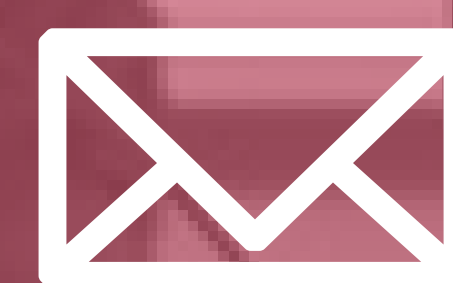
Apply now! Space is limited.



@SeattleCentralMESA



[www.seattlecentral.edu/mesa](http://www.seattlecentral.edu/mesa)



[mesa.central@seattlecolleges.edu](mailto:mesa.central@seattlecolleges.edu)



Seattle Central College  
1701 Broadway, BE 3221  
Seattle, WA, 98122  
206.934.4320



The NEW  
face of STEM



# ELIGIBILITY

To join MESA, you must be\*:

- US citizen, permanent resident, or DACA
- No previous bachelor's degree
- Intended bachelor's degree in a calculus-based STEM major\*\*
- At an economic disadvantage and/or first-generation college student

\*Priority membership will be given to those underrepresented in STEM Fields:

Black/African American  
Latinx/Hispanic  
First Nation/Alaska Native  
Native Hawaiian/Pacific Islander  
Female Identified

\*\*Public health, allied health, business and psychology majors will not be eligible for the MESA program.

**S**CIENCE  
**T**ECHNOLOGY  
**E**NGINEERING  
**M**ATHEMATICS

# WHAT WE OFFER

## ONLINE ORIENTATION

Orientation will ease your transition to Seattle Central and provide information on college programs, services, and extracurricular activities.

## ACADEMIC SUPPORT

Peer tutors are available in the MESA Center to support your learning in core math and science courses.

## TRANSFER ASSISTANCE

MESA assists with the transfer application process, visits to four-year institutions, and review of your personal statement to ensure successful transfer to universities.

## PROFESSIONAL DEVELOPMENT

Through networking events, workshops, and conference attendance, students learn how to become professionals in their fields.

## CAREER ADVISING

Exposure to a variety of STEM career options through guest speakers, field trips, career fairs, and internship opportunities.

## STUDENT STUDY CENTER

MESA students have access to a dedicated center space where they can gather to study, meet with tutors, make new friends, and engage in science.



# HOW TO APPLY

**1**

Review eligibility criteria and MESA Student Contract at [www.seattlecentral/mesa](http://www.seattlecentral/mesa)

**2**

Download application and fill out electronically -- handwritten applications will not be accepted

**3**

Email completed application to: [mesa.central@seattlecolleges.edu](mailto:mesa.central@seattlecolleges.edu)  
If eligible, the MESA Director will email you for an intake interview

