

# WHO WE ARE

MESA -- Mathematics, Engineering, Science Achievement -- at Seattle Central College is a friendly and comfortable space where students gather to study and engage in science.

We provide a unique combination of STEM activities, academic support, industry involvement, and an encouraging community environment to help students successfully transfer to four-year institutions in pursuit of STEM-based degrees.

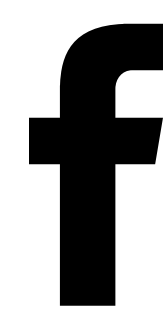
Our overriding aim is to diversify the STEM workforce by addressing the challenges historically underrepresented students face in their educational and career development.

Science  
Technology  
Engineering  
Math

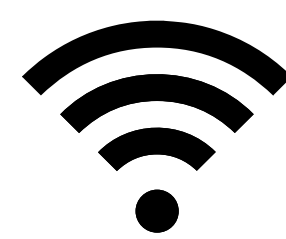
"MESA HAS PROVIDED A SAFE SPACE FOR ME TO LEARN, GET INSPIRED BY MY PEERS, AND GROW EXPONENTIALLY."

-ALESSANDRO LOU,  
COMPUTER SCIENCE STUDENT

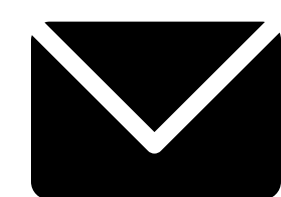
## CONTACT US



@SeattleCentralMESA



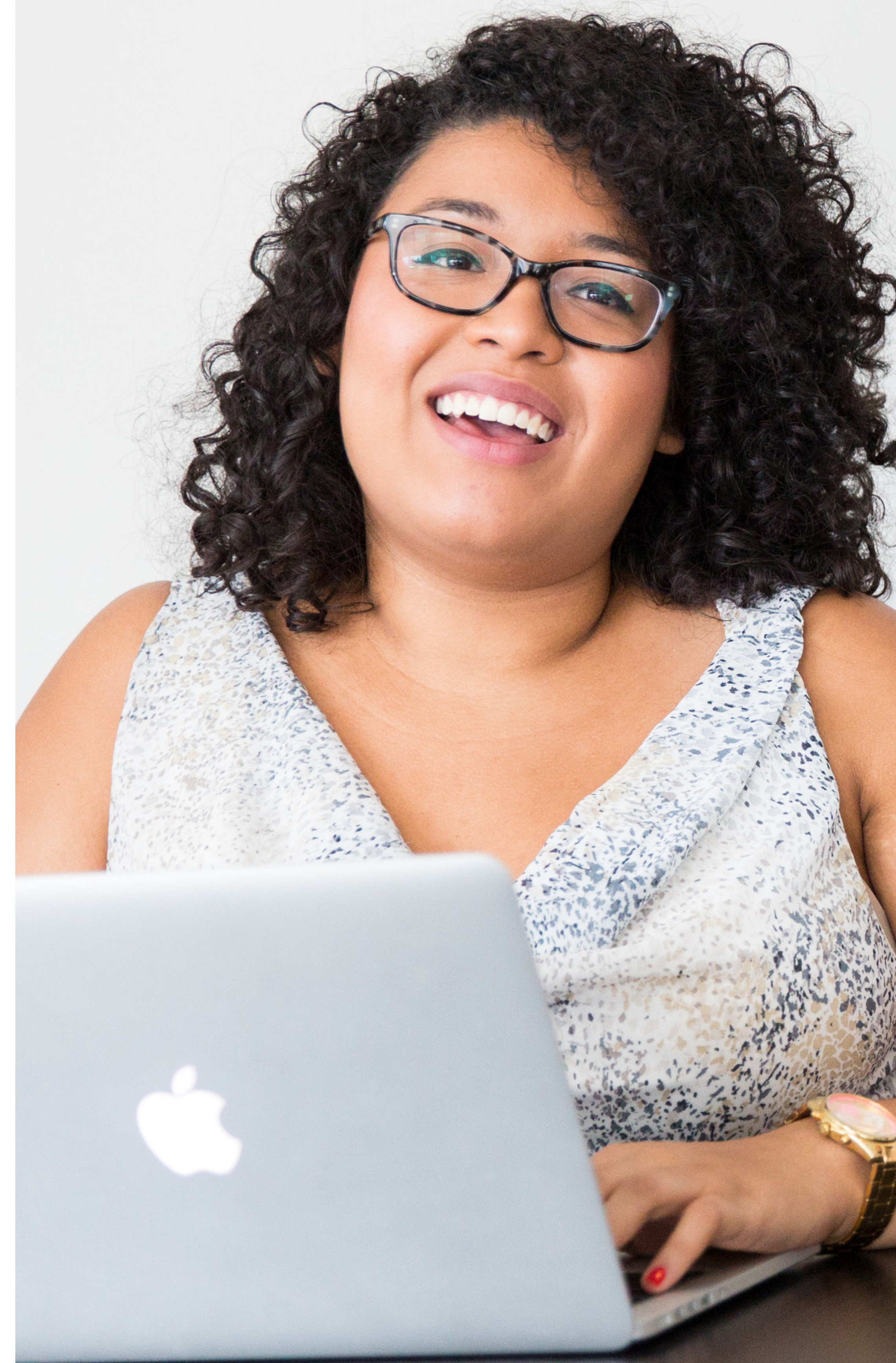
[www.seattlecentral.edu/mesa](http://www.seattlecentral.edu/mesa)



[MESA.Central@seattlecolleges.edu](mailto:MESA.Central@seattlecolleges.edu)



Seattle Central College  
1701 Broadway, BE 3221  
Seattle, WA, 98122  
206-934-4320



SEATTLE CENTRAL  
COLLEGE

Central to the Community for 50 Years





## ELIGIBILITY

Underrepresented in STEM fields:

Black/African American

Latinx/Hispanic

American Indian/Alaska Native

Native Hawaiian/Pacific Islander

Female identified

US citizen, permanent resident, or DACA.

No previous bachelor's degree.

Intended bachelor's degree in a calculus-based STEM major.\*

At an economic disadvantage and/or first generation college student.

\*Science, Technology, Engineering, Math majors only.  
As of spring 2017 nursing, public health, and allied health majors will not be eligible for the MESA program.



## WHAT WE DO

### Online Orientation

Orientation will ease your transition to Seattle Central College and provide information on college programs, services, and extracurricular activities.

### Academic Support

Peer tutors are available in the MESA Center to support your learning in core math and science courses.

### Transfer assistance

MESA assists with the transfer application process, visits to four-year institutions, and review of your personal statement to ensure successful transfer to universities.

### Professional development

Through networking events, workshops, and conference attendance, students learn how to become professionals in their field.

### Career advising

Exposure to a variety of STEM career options through guest speakers, field trips, career fairs, and internship opportunities.

### Student study center

MESA students have access to a dedicated center space where you can gather to study, meet with tutors, make new friends, and engage in science.

1

Review eligibility criteria and MESA Student Contract online at [www.seattlecentral.edu/mesa](http://www.seattlecentral.edu/mesa)

2

Download application and fill out electronically--handwritten applications will not be accepted

3

Email completed application to: [mesa.central@seattlecolleges.edu](mailto:mesa.central@seattlecolleges.edu)  
If eligible the MESA Director will email you for an intake interview

# APPLY TODAY!

Space is limited