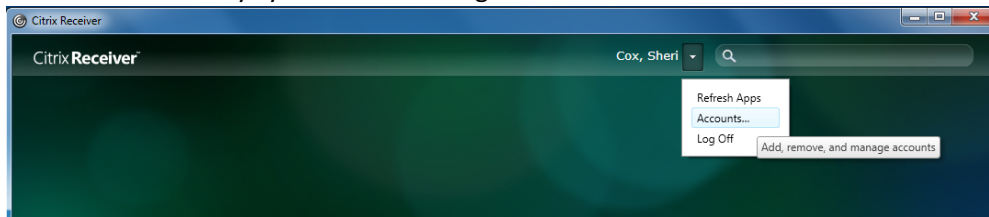


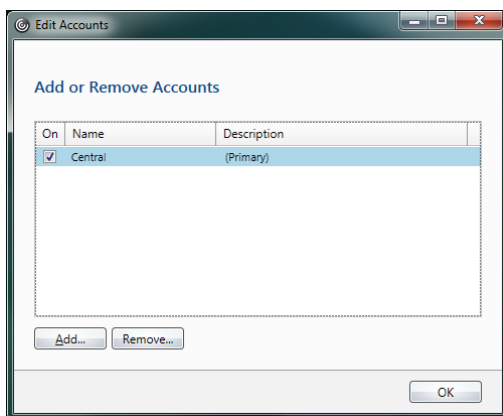
Reconfigure Citrix Receiver for EAD Citrix

You may have configured Citrix receiver on your home computer to access Seattle Central's Citrix. With the EAD Move, you will need to update your home configuration.

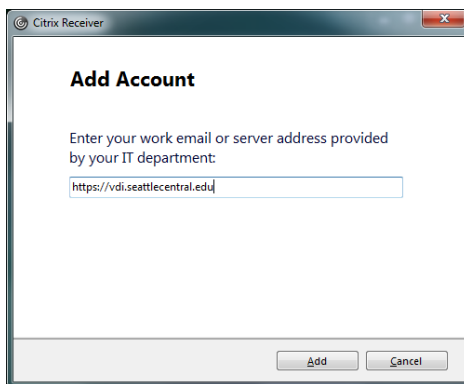
1. Open Citrix Receiver
2. Click on where it says your name or "Log on"



3. Click on Accounts
4. Select the old account and click Remove



5. Click Add



6. Type <https://vdi.seattlecentral.edu> and click add
7. Enter your email address and EAD password
8. Click OK
9. Click Close
10. Wait for the new Desktop icon to appear (this takes a few seconds)