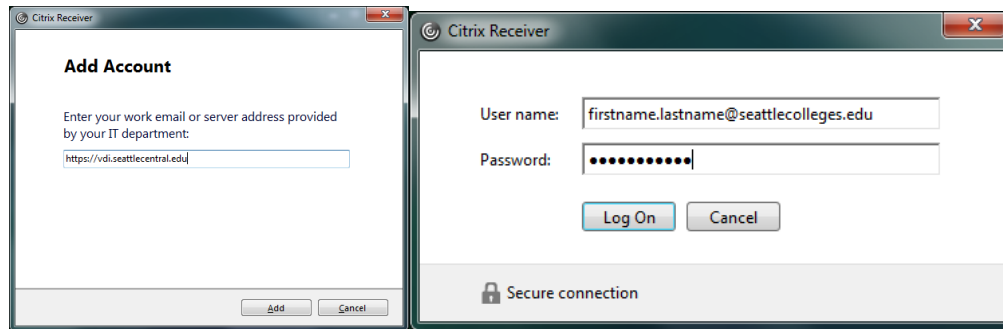


Citrix Receiver Install and Setup on Windows 7 – 10

If Citrix Receiver is already installed on your computer go to step 4b. Otherwise continue to step 1.

1. Go to <http://receiver.citrix.com>
2. Download the Citrix receiver. Save it to your download's folder or desktop. Your web browser may warn you the risks of downloading files from the internet. It may also prompt you for where to save it.
3. Run the CitrixReceiver.exe. A simple install wizard will begin. When complete, click finish.
4.
 - a. Once installed, it should ask you to add an account. If it does not, open Citrix receiver from the following locations:
 - b. Open Citrix receiver from the following locations:
 - On Windows 7 click on Start > All Programs > Citrix Receiver.
 - On Windows 8.1 Click on Start > <↓> Citrix Receiver.
 - On Windows 10 Click on Start > All Apps > Citrix Receiver.
5. If you are not prompted to log in with a username and password, you may see the following wizard. Enter <https://vdi.seattlecentral.edu> as the server address. Momentarily afterward, you will be prompted for your Citrix username and password. If you are prompted for a domain, it is ADMIN.



6. Once logged in, you will see your available desktops. For most people, this will be Desktop and Desktop Lite. Click on Desktop.

