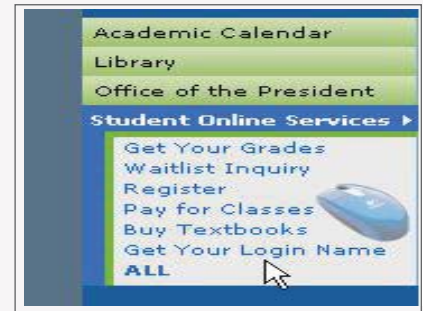


Student Network Login

Login Steps

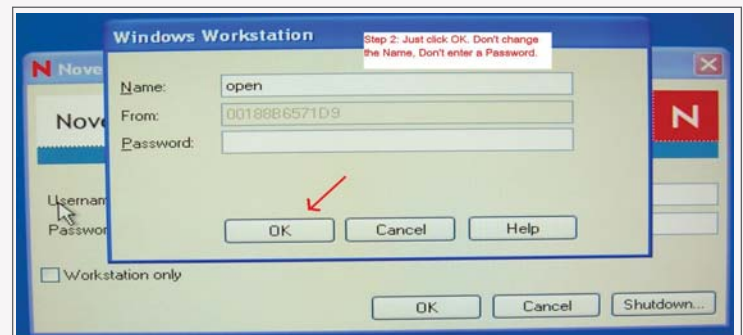
1. To find your login name,
2. Go to the campus website - www.seattlecentral.edu.
3. At the bottom left side of the page under Student Online Services you will see 'Get your login name'
4. Click on '**Get your login name**' and look up your login name.



5. Log in with your "student" login name and password.
6. Your password is the LAST SIX digits of your SID.



7. At the next screen just click the 'OK' button.



8. Remember to Logoff before you leave your class.

