

THIN CLIENT

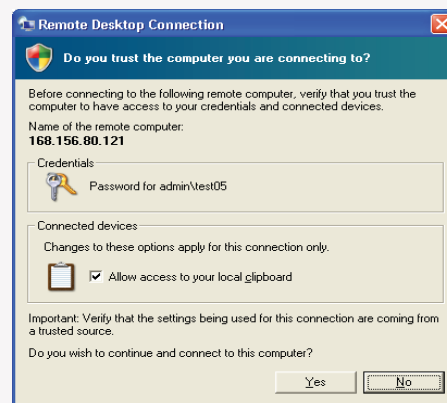
Login Steps

1. Launch Internet Explorer. (Firefox, Mozilla and Netscape will not work)
2. Go to <https://remote.seattlecentral.edu>

3. You will see the following webpage.
4. Choose your desired screen size. The default is 'Full screen'.
5. Click connect.



6. Click 'yes' at the following screen.



7. If you need access to your local hard drive click 'OK' on this screen. Otherwise, uncheck this box and click 'OK'.



8. Enter you username and password. Your username is your email alias. (example: hwasse)
9. The first time you login to Thin Client your default password is the last 6 digits of your SID number.
10. Click 'OK'

Note: The first time you login you will be prompted to change your password. Follow the directions and type in the last 6 digits of your SID# for your old password and then your new password and click ok.

