

THIN CLIENT- MAC

Login Steps - for Mac

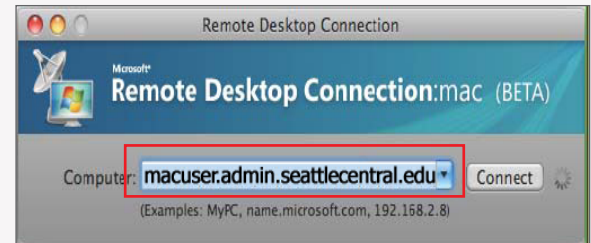
1. Use **Microsoft Remote Desktop Connection (RDC)** to connect to SCCC's Thin Client servers. Web browser access is not compatible with Macs.

Note: RDC is available for free download from

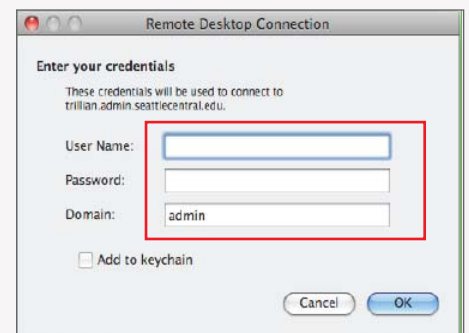
<http://www.microsoft.com/mac/products/remote-desktop/default.mspx/>



2. Open RDC. You will be prompted for a computer address to connect to.
3. Enter - **macuser.admin.seattlecentral.edu** and click **Connect**



4. Enter your username. Your **username** is your **email alias**. (example: hwasse)
5. Enter your password. Your **password** is the last **6 digits of your SID number**.
6. Make sure the **domain is admin**
7. Click **'OK'**



8. A warning dialog will appear. Click **yes** and continue.



9. Once you are connected to the Thin Client server, you will need to provide your Password again to login. The other fields should already be populated with the correct information.

