

# Seattle Central International Student E-NEWSLETTER

## Winter Quarter Walk-In Hours

The International Student Center is pleased to announce our walk-in hours for the remainder of the Winter quarter.

**Monday:** 10:30—12:30 and 1:30—3:00

**Tuesday:** 9:30—11:30 and 2:00—3:30

**Wednesday:** 10:30—12:30 and 1:30—3:00

**Thursday:** 2:00—3:30

**Friday:** 10:30—2:30 and 1:30—3:00

Please note that walk-in hours are designed for quick questions. For topics such as long-term academic planning and change of major/change of program, please schedule an appointment to meet with one of our Advisors. **NEW this quarter: Advisors will no longer be available during their lunch hour, although you can still stop by to submit forms, pick up I-20's, check the calendar, etc.**

\* Note: that walk-in hours are subject to change due to special events such as orientations and registration sessions.

## Lost and Found

Any Lost and Found items must be submitted to the Campus Security office, NOT to the International Student Center. Previously submitted items have been sent over to the Campus Security (BE1131 @ 206.587.5442).

## UW Majors Day - Tuesday, January 27th

UW Majors Day is your opportunity to explore many different UW departments, right here on the Seattle Central campus! Check out the info tables below.

Info Tables from: 10:00am to 1:00pm on the 1st Floor Hallway

- |                                      |  |  |                              |
|--------------------------------------|--|--|------------------------------|
| • Admissions                         | • Construction Management                            | • Health Sciences                          | • Program on the Environment |
| • Architecture & Urban Planning      | • Earth & Space Sciences                             | • Informatics                              | • Psychology                 |
| • Astronomy                          | • Education, Learning & Society                      | • Law, Societies and Justice               | • Social Work                |
| • Biology                            | • Environmental Studies                              | • Medical Technology                       | • Student Fiscal Services    |
| • Business                           | • Forest Resources:                                  | • Music                                    | • UW Academic Advising       |
| • Community, Environment, & Planning | • Environmental Science, Paper Science & Engineering | • Ocean & Fishery Sciences                 | • UW Bothell                 |
| • Comparative History Of Ideas       |  | • Office of Minority Affairs & Diversity - | • UW Evening Degree          |
|                                      |  | • Educational Opportunity Program          |                              |

**Important Dates**

|                  |                                     |
|------------------|-------------------------------------|
| February 2.....  | Groundhog Day                       |
| February 14..... | Valentine's Day                     |
| February 16..... | President's Day<br>(college closed) |
| February 27..... | Last day to withdraw                |
| March 8.....     | Daylight Savings<br>Time Starts     |
| March 25.....    | Winter QTR ends                     |
| April 6.....     | Spring QTR begins                   |

**Washington ID Cards/Licenses**

New students requesting for Washington ID / Driver's License can come starting the first week in February for their requests. Many new (Winter 2009) students have come into our office, requesting for the documents we provide in acquiring the Washington ID/Driver's License. Please note that our office is performing SEVIS reporting through the month of January, so the documents you will need for the Washington ID/Driver's License will not be available until the first week of February. Any request submitted by new students before then will be discarded.

**A Note on Federal Tax Information**

It's that time of the year again! U.S. Federal Tax Return season is happening as you read this information. Each year, we have students coming to the International Student Center asking the same questions:

What should I do with Federal Income Tax?  
 I don't make any money. Should I file Income Tax Return?  
 What should I do with "this" or "that" form?  
 When is the deadline for submitting Income Tax Return?

So, here's the answer: Please refer to the information we provide on our website FIRST: <http://seattlecentral.edu/international/taxinfo.shtml>. Then, if you still have questions AFTER reading the information on our website, please stop by our office and we will try our best to assist you.

**IMPORTANT:** We can only answer general tax related questions. If you need help completing the Federal Tax Return, please consult a tax preparation specialist.

Options on Filing Income Tax Return:

- H&R Block has an office next to the International Student Center; there will be a charge for the service.
- TaxCut, TurboTax, etc. are software available for filing income tax returns.
- The United Way provides free tax preparation services.
- Filing on the Internal Revenue Service (IRS) website is free of charge.

**New I-20s Ready for New Students**

All students who were new or transferred back to SCCC in the Winter 2009 quarter have been registered with SEVIS, and new I-20's reflecting "Continued Attendance" status have been issued. Please stop by the ISC with picture identification to pick up your new I-20 anytime AFTER February 2nd. Students who fail to pick up their I-20 will have a hold placed on their account, which could result in an inability to register for Spring quarter.

## Transfer Students with 45+ college-level credits: Time for your Long Range Plan!

Students working towards a transfer degree (AA or AS) are required by SCCC to do an official Long Range Plan (LRP). If you have 45+ college credits earned toward your transfer degree, you will need to attend a group meeting. At the meeting, we'll go over important information. Then you will receive an official LRP form and be able to schedule a LRP appointment with an advisor.

### Choose One Meeting:

#### Jan. 29, Thursday

- 10:00 - 10:45 in SA 204a
- 12:00 - 12:45 in BE 3211

#### Jan. 5, Thursday

- 3:30 - 4:15 in BE 4166

All student should be able to attend one of the meetings. If for some reason you can not make it to any of the sessions, please contact Andrea Vederoff directly ([avederoff@sccd.ctc.edu](mailto:avederoff@sccd.ctc.edu)).

Note: We mailed out letters to students last week. If you think you need a LRP but did not receive a letter, please check your contact information on Student Online Services.

## Workshops and Information Sessions

### Graduation Workshop

**Wed, Feb. 25 at 1:30pm in BE 4136**

Stop by and learn about how to transfer to another college when you graduate, the 60 day grace period, OPT, and lots more!

### High School Completion Workshop

**Thurs, Feb. 26 at 2pm in BE 4143**

Learn about how you can earn your High School diploma while attending Seattle Central! We will discuss the requirements and go over everything you need to know to get started with high school completion!

### Employment Workshop

**Wed, Jan. 28 at 3pm in BE 3211**

**Wed, Mar. 4 at 2pm in BE 4136**

Come and learn about the different employment options for international students, including on-campus jobs and Optional Practical Training (OPT).

### American Internship Experience

**Tues, Jan. 27 at 2:00 in BE 1110**

Earn college credit, learn valuable skills, intern or volunteer for local businesses. (You must be in College Bridge level 4 or above.) Come to this session to learn more! <http://www.seattlecentral.org/international/internships.shtml>

**IMMIGRATION UPDATES & REMINDERS:**

- **Address Updates:** If you have recently moved, we may not have your correct mailing address! Please update your new address and phone number online via the Student Online Services web-site: <http://seattlecentral.edu/sos/>

Remember: **F-1 students are responsible for reporting new addresses within 10 days of moving.** Otherwise, U.S. Immigration will consider you out of status.

- **Withdrawing from Classes:** Please come and speak with an Advisor in the International Student Center before dropping a class or taking an "NC" grade. International students must be enrolled in at least 12 credits at all times, and withdrawing from classes or taking an "NC" may affect your immigration status.
- **Optional Practical Training (OPT):** If you will be graduating during Winter quarter and are interested in applying for Optional Practical Training (OPT), please fill out an Optional Practical Training Request Form at the International Student Center to see if you may be eligible.

Eligible students may apply for OPT up to 90 days before the end of their program and up to 60 days after. However, it's always a good idea to apply early so that you can receive permission to start working sooner!

- **Registration:** Please remember when registering for classes that international students must be enrolled full-time and that only 3 credits of online or distance learning classes count toward the full-time requirement. If you have any questions or would like to discuss taking a vacation quarter, quarter off, or reduced course load, please come to the ISC and speak with an Advisor.

**Lewermark Scholarship**

Lewermark, the company that provides many of our international students with health insurance each quarter, is offering 3 scholarships!

For more information, or to download an application, please visit <http://www.lewermark.com/Default.aspx?tabId=124384>.

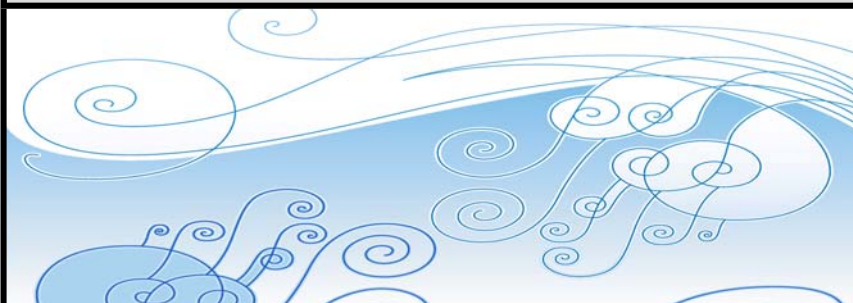
This is a great opportunity, but don't wait too long! The scholarship application deadline is March 1, 2009.

**Insurance Questions?**

If you have any question regarding your insurance policy, please refer to your insurance packets for answers. Didn't receive an insurance packet? Stop by the International Student Center!

You may also contact the Lewer Agency directly for more information. Their website is: [www.lewermark.com](http://www.lewermark.com).

Also, feel free to stop by the International Student Center and speak with Derek during our office hours, Monday through Friday, 8:00 am to 4:30 pm. We are happy to help answer your insurance questions!



## Lunar New Year Celebration

The Chinatown-International District welcomes you to the Lunar New Year Celebration on January 31, 2009 in Hing Hay Park! Experience first-class multicultural entertainment including lively Lion and Dragon dances, rhythmical Japanese taiko drumming, drill team performances and much more! Free admission!



### Schedule of Events

- 12:00pm Opening Ceremony under the Chinatown Gate-  
Mak Fai Kung Fu Club (lion & dragon  
dance / martial arts)
- 12:30pm Kaze Daiko (Japanese taiko drumming)
- 1:00pm Filipino Youth Activities Drill Team
- 1:30pm Luck Ngi Musical Society (Performing at Luck Ngi  
Musical Club  
512 7th Ave S., Seattle 98104)
- 2:00pm Seattle Wushu Academy (martial arts, tai chi and  
wushu)
- 2:30pm Master David Leong's Shaolin Kung Fu Academy  
lion & dragon dance/martial arts)
- 3:00pm Northwest Taiko (Japanese taiko drumming)

## February 20-22, 2009 Stevens Pass Ski Trip

Spend a weekend skiing and exploring Leavenworth!

**Cost:** \$249 (\$235 for first time skiers) If this is your first time skiing, you must take a lesson. Ski lessons & rentals are not included in the cost.

### The cost includes:

- 2 nights at Linderhof Inn
- Continental breakfast for Friday & Saturday
- 2 Lift Tickets
- Roundtrip transportation
- Prizes
- Snacks

**Deadline to pay: Friday, February 13**

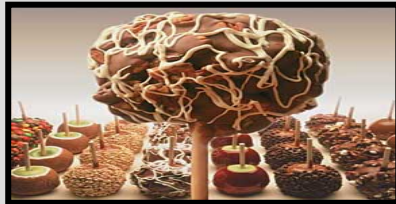


Go to [www.theplaceseatle.com](http://www.theplaceseatle.com) to register and for more details, or contact Mia Bailey at 206-351-0121 or [mia@theplaceseatle.com](mailto:mia@theplaceseatle.com)



**JANUARY 29th Thursday 3-5 PM**  
**COMMUNITY SERVICE AT THE FOOD BANK**

Do a good deed and give back to the community by signing up to volunteer. Bring some warmth into the lives of those in need during these cold winter months!



**FEBRUARY 14<sup>th</sup> Saturday 12-2 PM**  
**VALENTINE'S DAY CHOCOLATE FACTORY TOUR**  
**\$6 PER PERSON!!**

Join us and bring your sweetheart to Theo, Seattle's finest chocolate factory, where you can see the fascinating chocolate-making process firsthand and get to sample some delicious treats!



**FEBRUARY 28<sup>th</sup> Saturday 12-5 PM**  
**SEATTLE CENTRAL TABLE TENNIS TOURNAMENT**  
**FREE!!!**

Put your table tennis skills to the test and prove you



**FEBRUARY 8<sup>th</sup> Sunday**  
**SEATTLE SYMPHONY**  
**STARTS FROM \$17 PER PERSON**

Treat yourself to the virtuosic fireworks of Liszt's flamboyant Piano Concerto No. 1, played by Seattle's favorite Irish pianist, **Barry Douglas**.



**MARCH 14<sup>th</sup> Saturday 1-3 PM**  
**LAKEVIEW CEMETERY (FREE!!!)**

Lakeview Cemetery is the most spectacular graveyard in the city. Many of Seattle's pioneers are buried here, including **Bruce Lee** and **Brandon Lee**, **Princess Angeline**, **Dexter Horton**, **Doc Maynard**. Even if the dead do not intrigue you, this is a chance to explore and pay your respects to the heroes who have passed.

Come to the IAB Office in Room 205H of the MAC building or email us at [sccintlactivities@sccd.ctc.edu](mailto:sccintlactivities@sccd.ctc.edu) to sign up or for more information!

## English Conversation Group

Chi Alpha is pleased to sponsor an English Conversation Group for international students who want to expand their vocabulary, make some new friends, and practice speaking English.

The group meets Thursdays from 11:00 - 11:50 in SA 204A. Everyone is welcome to show up, participate, and have a good time. You can also feel free to bring your lunch.

### Questions? Contact Dan!

(206) 660-5541 or (206) 547-8990  
[Dan.dameron@nwstudent.org](mailto:Dan.dameron@nwstudent.org)

For more information about Chi Alpha, please visit <http://www.nwstudent.org/sccc/chialpha.html>