

February 24, 2009

Seattle Central International Student E-NEWSLETTER

Foundation Scholarship Workshop

Who should attend? Students who want to find out more about the Seattle Central Foundation Scholarships and general resources and information about the scholarship process.

Where? Room 1102E

When? Two sessions: March 4th and March 18th

What time? 1:00 - 1:50

How? Interested students can sign up in the Career Center in room 1102E. Space is limited to 20 students for each session. Ask to sign up at the front desk or call (206) 344-4383.

Note: These workshops are presented by the Seattle Central Community College Career Center.

Fall Back, Spring Ahead...

Daylight saving time for North America (USA, Canada, Mexico) will begin at 2 am on March 8, 2009.

Before you go to bed the night before, don't forget to turn your clocks **forward** one hour!

International Education Programs Annual Survey

The International Education Programs Division invites ALL international students to take our annual division-wide survey! This is a great opportunity to let us know what's important to you, and what you think of your experiences and interactions so far at Seattle Central! Just click on the following link or copy and paste it into your browser:

http://www.surveymonkey.com/s.aspx?sm=yumnRsraUM2QpJyKKzQuKg_3d_3d

Top 10 Reasons to Complete the Survey

1. It's fast and easy!
2. All the cool kids are doing it!
3. It's a great way to make your voice heard!
4. It's probably more fun than your homework!
5. It could make you rich! (probably won't though)
6. It's low-calorie and totally fat free!
7. We really want to hear what you think!
8. It might prevent global warming! (probably not)
9. We really appreciate it!
10. Please :)

Position Available on the Intercultural Activities Board

The Intercultural Activities Board is a team of domestic and international students that work together to provide local activities and other opportunities for involvement to international students at Seattle Central Community College. In addition to this primary goal, IAB also strives to maximize interaction between domestic and international students, assists in orienting international students to Seattle and SCCC, collaborates with other student groups, and provides valuable leadership opportunities that enhance the international student experience.

We currently have a temporary opening for a Communications Coordinator position. This position will span the duration of Spring quarter. However, the chosen candidate is welcome to reapply for a position on the Board for the following year as well. Specific responsibilities include

- Planning activities.
- Serving as the primary point of contact for the IAB.
- Monitoring the IAB email account.
- Liaising with student groups on campus.
- Attending the weekly IAB office meeting.
- Writing copy for flyers and advertisements.
- Ensuring that activities are publicized in the Chalkboard, E-News, and on the IEP website.
- Ensuring that flyers are posted and taken down as needed.
- Completing other duties as assigned.
- Working for 7 hours in the IAB office each week.

To be eligible for this position, students must have a minimum cumulative GPA of 2.5 and must be enrolled in courses for Spring quarter. This position receives a \$600 stipend per quarter.

Applications are available in the IAB Office, which is located in room 205H of the Mitchell Activity Center. Completed applications should be turned in to the IAB Office by 4pm on Thursday, March 5th. Please note that the IAB Office is open Monday – Friday from 12:00 – 4:00pm. For more information, please contact cthomas@sccd.ctc.edu.

Become an Orientation Volunteer

We are looking for volunteers to help out new students at our Spring Orientation on March 30, March 31, and April 2. This is a great opportunity to make a difference and to help make our students' first experiences at Seattle Central positive ones! Applications are available in the Intercultural Activities Board Office, which is located in the Mitchell Activity Center in room 205H.

Completed applications are due to the IAB Office by 4pm on Thursday, March 5th. Important: When submitting your application, please also sign up for an interview time on the sign-up sheet in the IAB Office.

For further information, please contact Hoang Lam at IABorientation@myseattlecentral.com.

Please note that to be eligible to volunteer, you must be available and in Seattle on March 30, March 31, and April 2.

Congratulations Scholarship Recipients!

International Education Programs is pleased to announce the recipients of the IEP Scholarships for Spring quarter:

Ying Xu
Justin Kurnjawan Linggadiharja
Haruka Saitoh
Jaehyeok Kang
Eun Saem Lee

Thank you to all those that applied, and congratulations to all of our scholarship recipients! For more information about the IEP scholarships, please visit <http://seattlecentral.edu/international/adminscholarships.shtml>.

A Note on Federal Tax Information

It's that time of the year again! U.S. Federal Tax Return season is happening as you read this information. Each year, we have students coming to the International Student Center asking the same questions:

- Do I need to file Federal Income Tax?
- What should I do if I need to file Federal Income Tax?
- I don't make any money, should I file Income Tax Return?
- What should I do with the 1098-T or W-2 form?
- When is the deadline for submitting Income Tax Return?

So, here's the answer: Please refer to the information we provided on our website FIRST: <http://seattlecentral.edu/international/taxinfo.shtml>; then, if you still have questions after reading the information on our website, please stop by our office and we will try our best to assist you.

IMPORTANT: We can only answer general tax related questions. If you need help completing the Federal Tax Return, please consult a tax preparation specialist.

Options for International Students on Filing Income Tax Return (for those who work on campus):

- H&R Block has an office next to the International Student Center; there will be a charge for the service.
- Download the Form 1040NR-EZ from the Internal Revenue Services www.irs.gov, complete the information on the form, and send it to the location as indicated on the instructions.

Important Dates

February 27.....	Last day to withdraw
March 8.....	Daylight Savings Time Starts
March 25.....	Winter QTR ends
April 6.....	Spring QTR begins

Attention College Students!

Please ask yourself the following questions:

Were you a student in SCIE, Seattle Central's ESL and College Bridge program for international students?

Have you been studying full-time in the college for two or more quarters after you graduated from the College Bridge program?

Do you want \$5 bucks to get some of Seattle Central's great espresso, desserts or food?

If you answered yes to all of these questions, come to an informal chat session where you talk with other students about how your experience in ESL classes affected your experience in college classes.

If you finished ESL and you're now a college student, and you want to participate and earn \$5, send an e-mail message to scieassist@sccd.ctc.edu stating on which day you can come. Space is limited to the **first ten students**, each day, so hurry!

DATE: Thursday March 5 OR Friday March 6, 2009

TIME: 1:00 p.m. -- 1:50 p.m.

PLACE: International Student Center at Central

Be there (or be square), talk with some cool students, and get your five-dollar coupon!

Don't miss it!

Workshops and Information Sessions

Graduation Workshop

Wed, Feb. 25 at 1:30pm in BE 4136

Stop by and learn about how to transfer to another college when you graduate, the 60 day grace period, OPT, and lots more!

High School Completion Workshop

Thurs, Feb. 26 at 2pm in BE 4143

Learn about how you can earn your High School diploma while attending Seattle Central! We will discuss the requirements and go over everything you need to know to get started with high school completion!

Employment Workshop

Wed, Mar. 4 at 2pm in BE 4136

Come and learn about the different employment options for international students, including on-campus jobs and Optional Practical Training (OPT).

IMMIGRATION UPDATES & REMINDERS:

- **Address Updates:** If you have recently moved, we may not have your correct mailing address! Please update your new address and phone number online via the Student Online Services website: <http://seattlecentral.edu/sos/>

Remember: **F-1 students are responsible for reporting new addresses within 10 days of moving.** Otherwise, U.S. Immigration will consider you out of status.

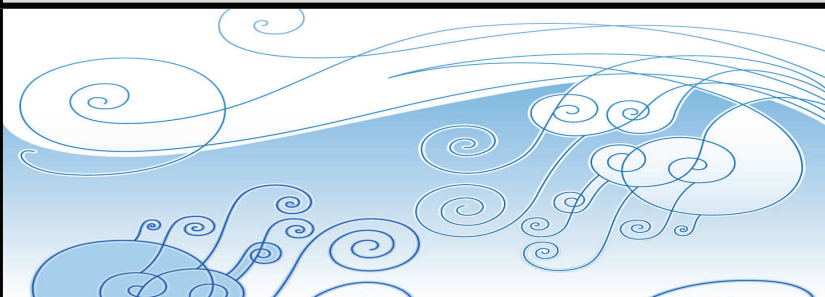
- **Withdrawing from Classes:** Please come and speak with an Advisor in the International Student Center before dropping a class or taking an "NC" grade. International students must be enrolled in at least 12 credits at all times, and withdrawing from classes or taking an "NC" may affect your immigration status.
- **Optional Practical Training (OPT):** If you will be graduating during Winter quarter and are interested in applying for Optional Practical Training (OPT), please fill out an Optional Practical Training Request Form at the International Student Center to see if you may be eligible.

Eligible students may apply for OPT up to 90 days before the end of their program and up to 60 days after. However, it's always a good idea to apply early so that you can receive permission to start working sooner!

- **Registration:** Please remember when registering for classes that international students must be enrolled full-time and that only 3 credits of online or distance learning classes count toward the full-time requirement. If you have any questions or would like to discuss taking a vacation quarter, quarter off, or reduced course load, please come to the ISC and speak with an Advisor.

UW - Bachelor's of Social Welfare Application Orientation - 2/26

The UW – BASW program will be offering an Applicant Orientation on February 26th, 2009 from 2 -4 p.m. at UW. This event provides students the opportunity to meet faculty and admissions staff prior to the April 1st deadline. If a student has any questions they can contact Sonia Duckworth at (206) 685-2425, 800-543-5676 or soniduc@u.washington.edu. Students can also receive the most update information regarding the BASW program by requesting materials online at <http://depts.wahington.edu/sswweb/>.

**Western Washington - BA in Elementary Education - Information Sessions at NSCC**

For those students who want to obtain a BA degree in Elementary Education from Western WA:

Information Sessions at North Seattle Community College to learn more about the Woodring School of Education. All sessions will begin at 6 p.m. and will be held at NSCC in the Technology Building room 1550. If students have questions they can contact Cheryl at (206) 529-6052 or Cheryl.jason@wwu.edu.

Information Sessions:

March 11, 2009

April 2, 2009

Important Updates About Washington State ID Cards and Driver's Licenses

TO: All Students who have submitted Enrollment Letter request forms for Washington ID / Driver's License and those who would like to request:

Since there have been some changes at the Department of Licensing to verify students' identities, please remember that you will need to provide ALL required documents when you go to the DOL (if these are applicable to you):

1. Enrollment Letter with Date of Birth listed*
2. SEVIS Screen print out to prove the current address*
3. Valid Passport
4. Valid visa
5. Official Transcript [NEW (first quarter) students may not be able to provide the transcript.]
6. Driver's License from Home Country
7. Birth Certificate from Home Country
8. A driver's license from another state in the U.S.
9. Social Security Card / Number

*These will be sent in a sealed envelope to you.

Note: Students need to provide at least three items listed from #3 to #9. For example: a valid passport, a valid visa, and the official transcript.

For more information, please contact your local DOL office or refer to the DOL website at: <http://www.dol.wa.gov/driverslicense/idproof.html>.

Important Registration Reminders

College Bridge Reading 5 going to Level 6— Late Registration

Were you unable to attend the other two meetings? Well don't despair. We have one more meeting lined up on Feb. 24th at 4:00pm in BE 1110. Please bring your photo ID and Student ID number.

Remember, online registration ends for level 5 students on March 9th. After that, students currently in level 5 will need to make changes to their schedules on paper registration forms.

CB 4 going to Level 5

Students will register on March 3 at 4:00pm in BE 1110

Your Teachers will give you information in your classes next week.

Levels 1-3 on March 20 in SA 305 after Graduation

Remember to pay for your classes! Tuition is due within 7 business days of registering for classes. If you do not pay your tuition, you may be dropped from your classes.

Clubs and Events

S.P.A.C.E. (Students Practicing Astronomy in a Cooperative Environment):

This club creates a network for students interested in the study of astronomy. It provides a non-elitist environment for students new to the field of science.

If you are interested, contact [Michelle Evens](mailto:brilliant.aldebaran@gmail.com) (brilliant.aldebaran@gmail.com)

Phi Theta Kappa – Alpha Chi Zeta Chapter:

The purpose of Phi Theta Kappa is to recognize and encourage scholarship among two-year college students. To achieve this purpose, Phi Theta Kappa provides opportunities for the development of leadership and service, an intellectual climate for the exchange of ideas and ideals, lively fellowship for scholars, and stimulation of interest in continuing academic excellence. The Alpha Chi Zeta Chapter implements the projects and programs of Phi Theta Kappa at Seattle Central.

Membership eligibility requirements: At least a 3.3 cumulative GPA and 12 accumulated credits at Seattle Central.

To Join: Pick up an application outside the registration office. Attach a check for \$60 to your application and put it under Ms. Oakley's door at 4106B. You can also drop it by a meeting! Every Friday at 2 PM, outside of 4106B. See the [Calendar](#) page to verify the time.

Contact: Nada Oakley <noakle@sccd.ctc.edu>

University District Farmer's Market

The University District Farmers Market is Seattle's oldest and largest "farmers-only" neighborhood market. Founded in 1993, this Saturday market offers a place for more than 50 Washington State farmers to sell their fresh produce and quality products each week. The market is now open year-round, with a great selection of fall and winter produce.

Location : University Way and NE 50th Street, Seattle, WA

Time: Saturday, February 28, 2009, 9am – 2pm

Want your club/student organization/s event promoted in the E-News? Just send an email to the Intercultural Activities Board at sccintlactivities@sccd.ctc.edu. The E-News is published every other Tuesday while classes are in session, and space for club/student organization events is given on a first come/first served basis.



March 8th Sunday

SEATTLE SYMPHONY

STARTS FROM \$17 PER PERSON

Treat yourself to the virtuosic fireworks of Liszt's flamboyant Piano Concerto No. 1, played by Seattle's favorite Irish pianist, **Barry Douglas**.



MARCH 14th Saturday 1-3 PM
LAKEVIEW CEMETERY (FREE!!!)

Lakeview Cemetery is the most spectacular graveyard in the city. Many of Seattle's pioneers are buried here, including **Bruce Lee** and **Brandon Lee**, **Princess Angelina**, **Dexter Horton**, **Doc Maynard**. Even if the dead do not intrigue you, this is a chance to explore and pay your respects to the heroes who have gone